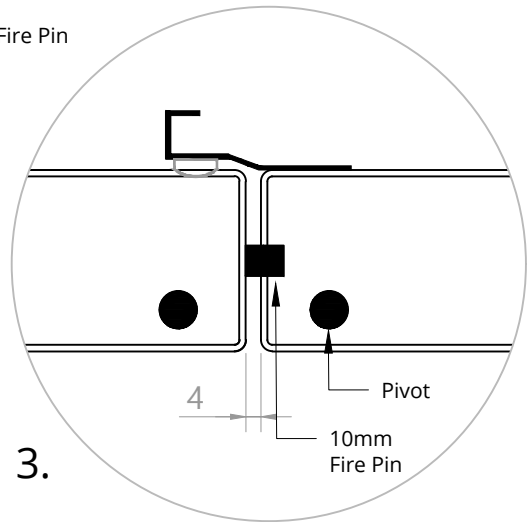
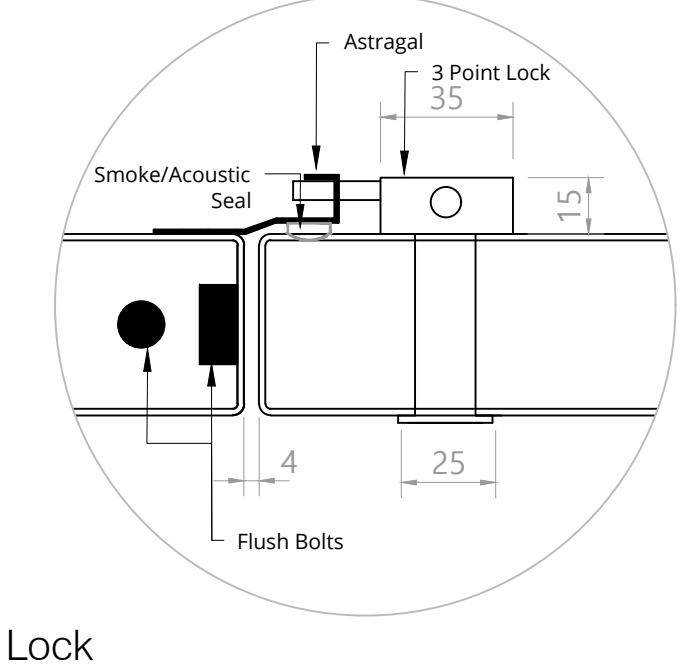
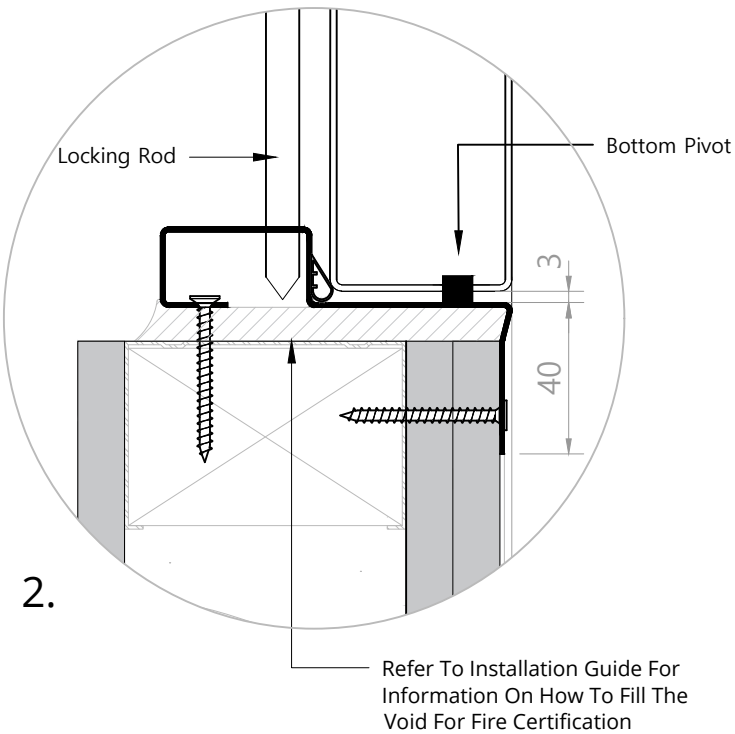
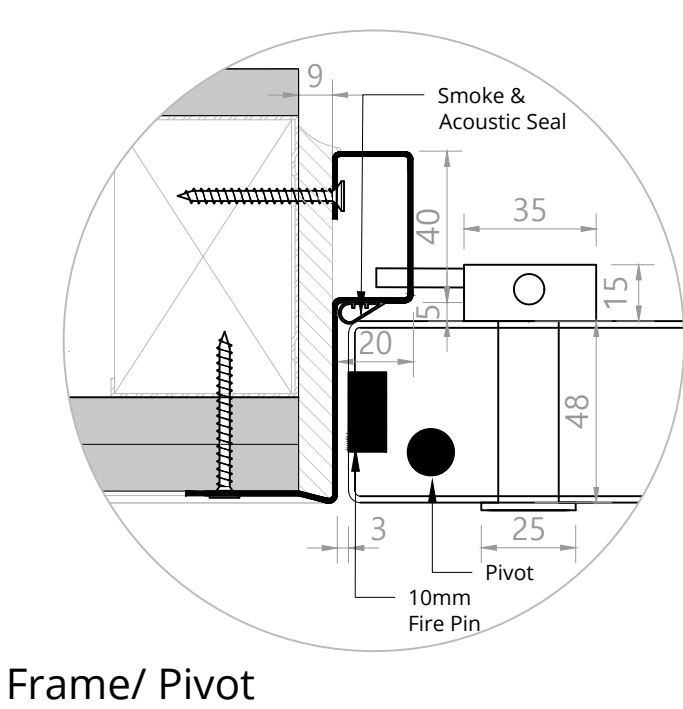
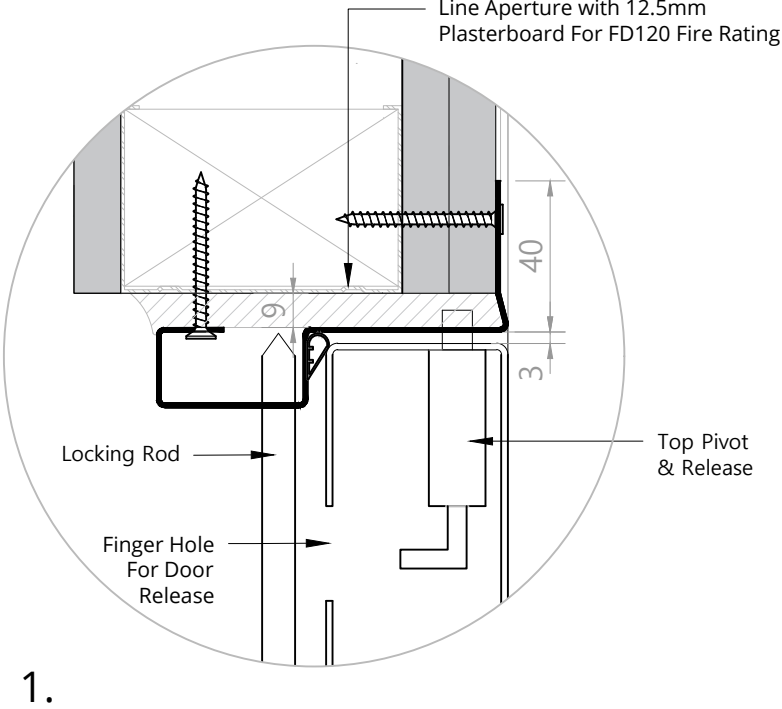
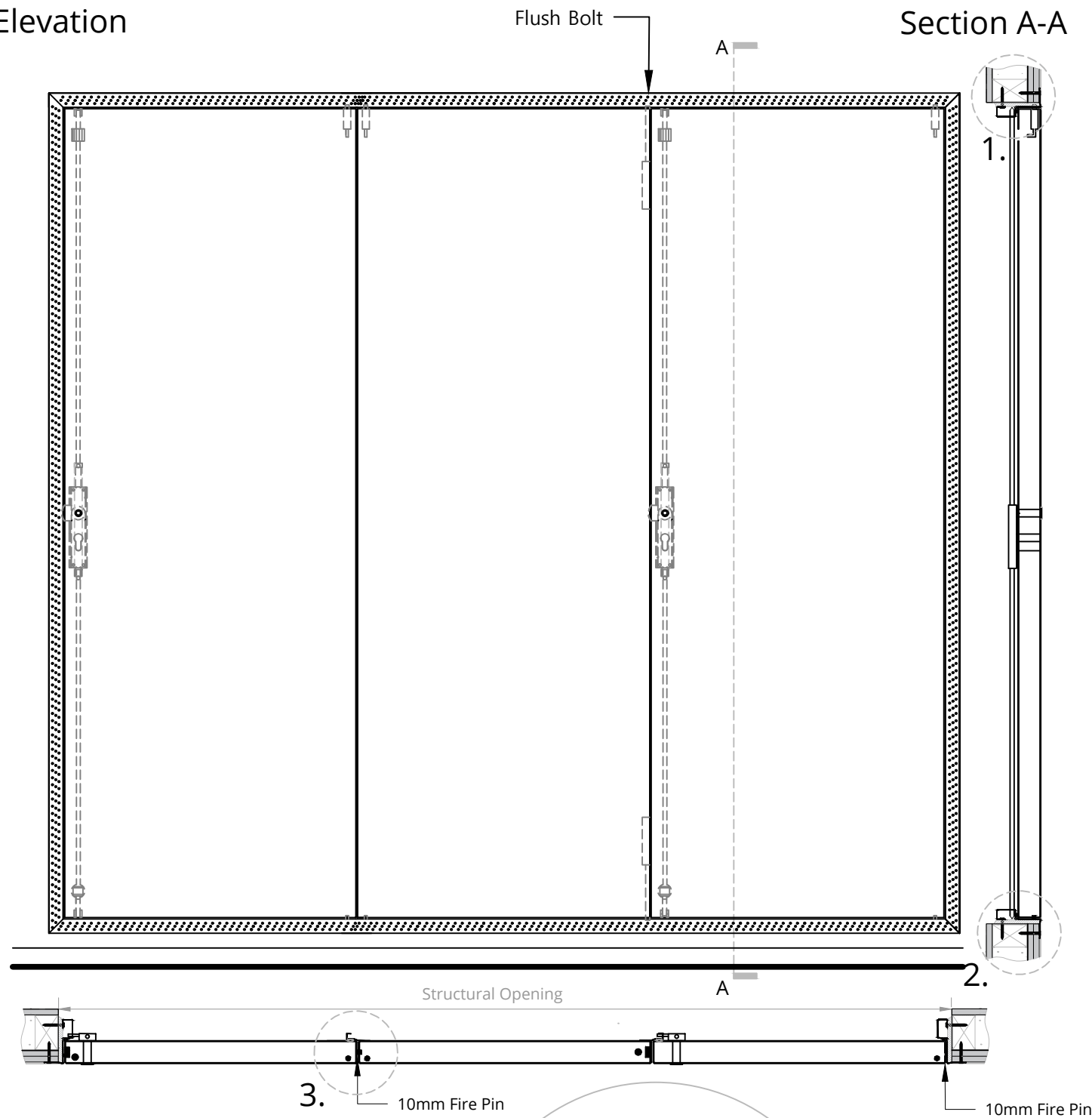


Elevation

Section A-A



PLEASE NOTE: For FD90/FD120 Fire Rating The Aperture Must Be Lined With A Minimum Of 12.5mm Plasterboard

aspex

W: www.aspex-uk.co.uk
E: sales@aspex-uk.co.uk

England & Wales T: 0116 278 3506
Scotland & Ireland T: 0123 672 0061

drawing title

Triple FD120 Steel Door
Euro Profile Lock

dwg number

NRS-43100-12-STE

rev

product

drawn by

IS

novista
riser doorsets

date

01/07/20

scale

1:12 & 1:2 @ A3

rev

comment

date

notes

1. Do not scale drawings
2. Site verify all dimensions prior to construction
3. Report all discrepancies to Aspex immediately
4. Read in conjunction with all relevant documents and drawings