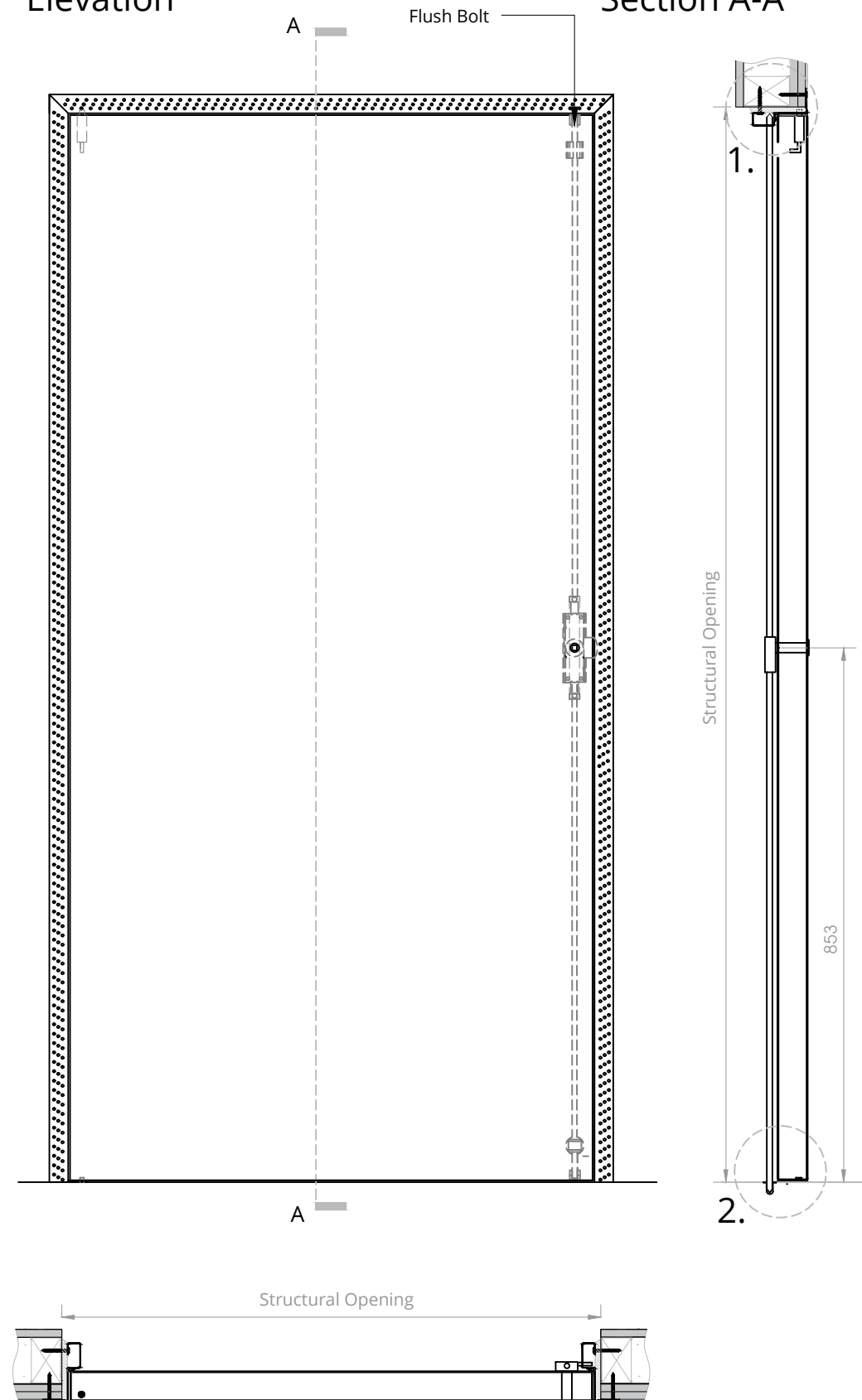
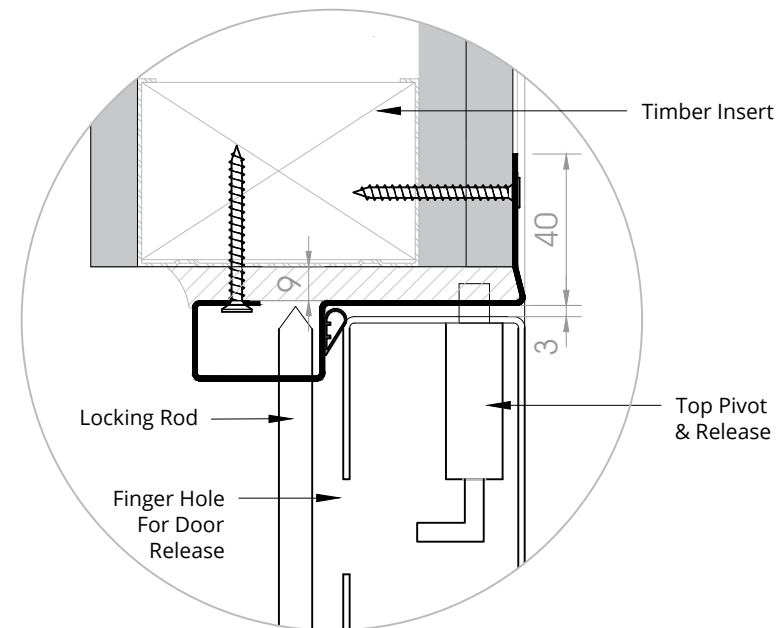


Elevation

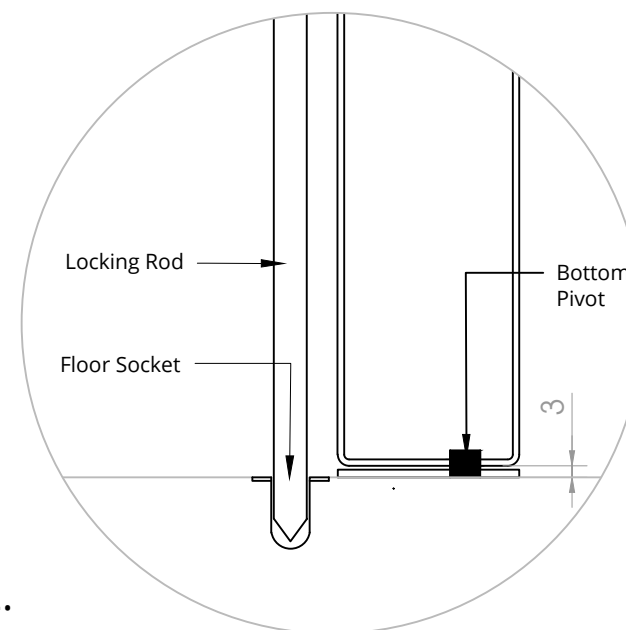
Section A-A



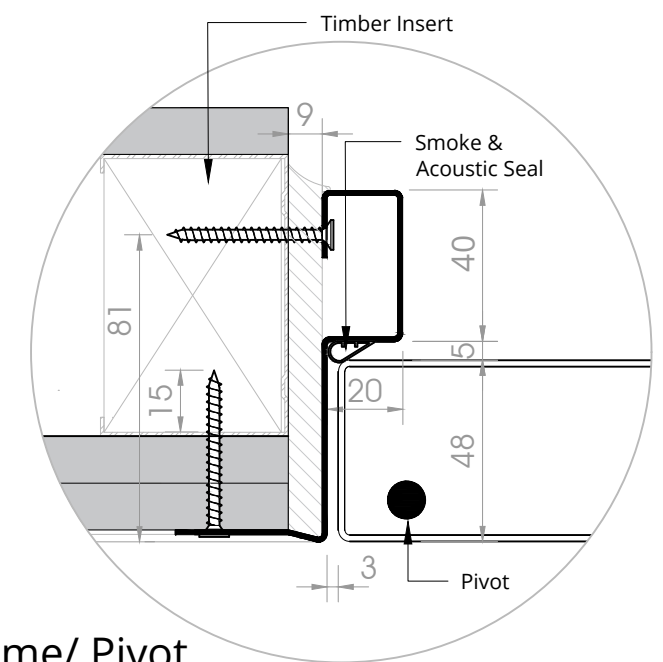
1.



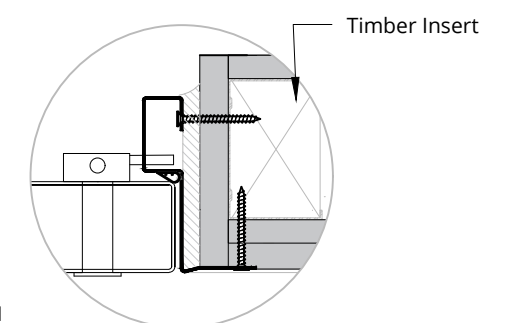
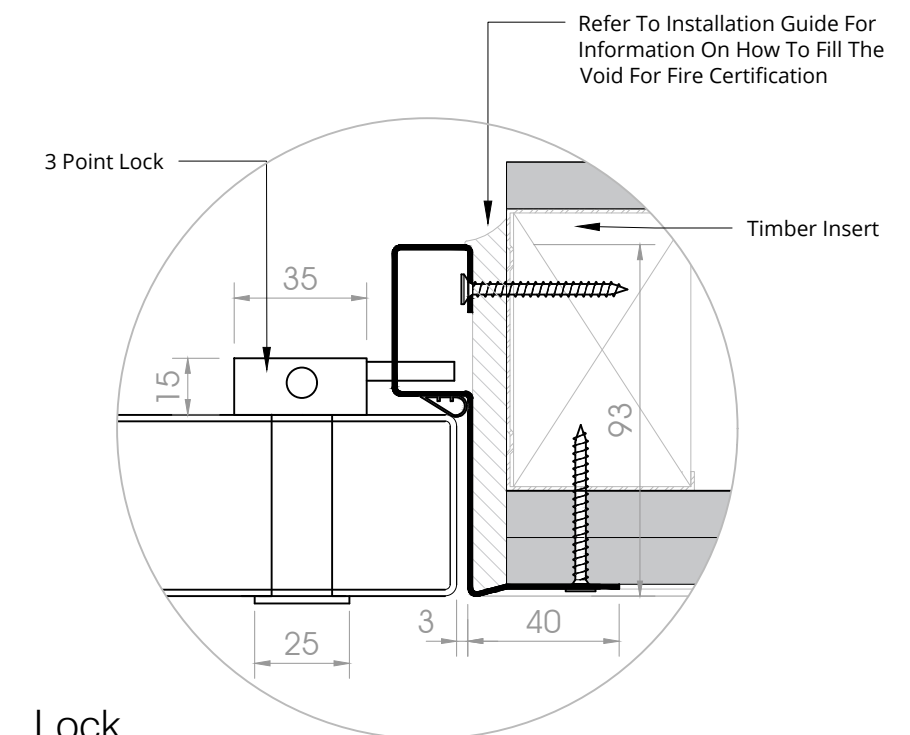
2.



Frame/ Pivot



Lock



PLEASE NOTE: For FD90/FD120 Fire Rating The Aperture Must Be Lined With 15mm Plasterboard

aspex

W: www.aspex-uk.co.uk
E: sales@aspex-uk.co.uk

England & Wales T: 0116 278 3506
Scotland & Ireland T: 0123 672 0061

drawing title
Single FD120 Steel Door
Standard Lock

dwg number
NRS-31000-12-STE

rev
C

product
drawn by
IS

novista
riser doorsets

date
01/07/20

scale
1:10 & 1:2 @ A3

rev
A
B
C
comment
Plasterboard Thickness & Flange Revised
Timber Insert Text Added
Floor Socket Detail Revised

date
28/04/21
14/03/23
18/05/23

notes
1. Do not scale drawings
2. Site verify all dimensions prior to construction
3. Report all discrepancies to Aspex immediately
4. Read in conjunction with all relevant documents and drawings